

## SUMMIT

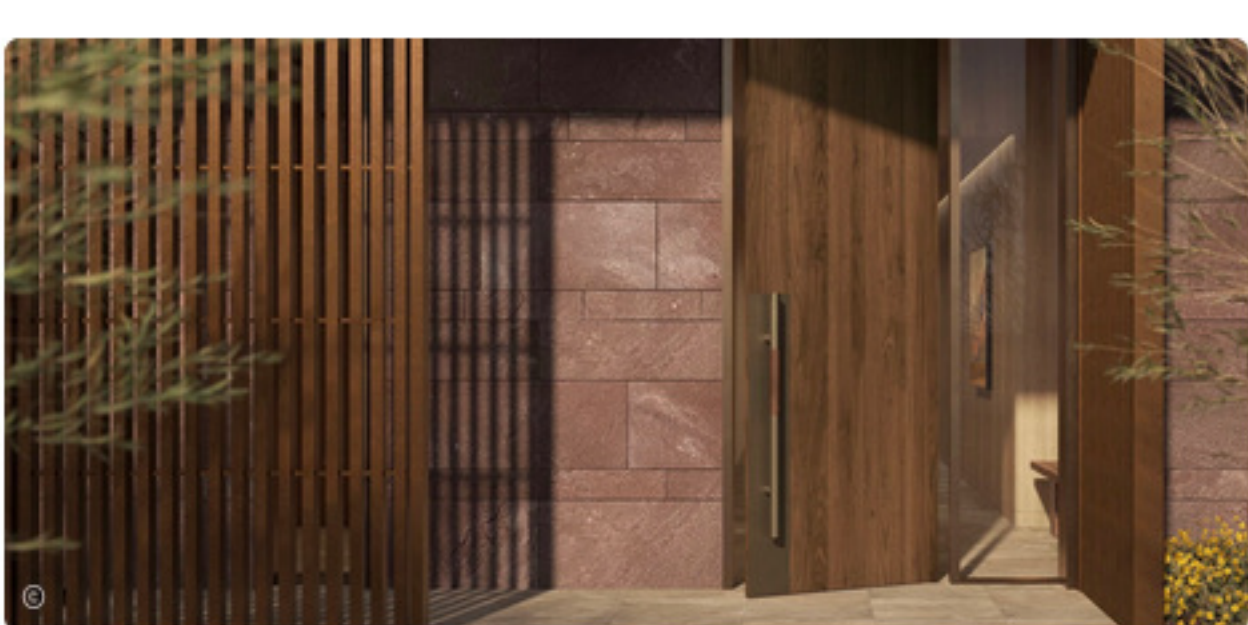


## SUMMIT

Olson Kundig - Architects

Replay Destinations, a leading developer of premier destination resort and residential communities, announced today its partnership with world-renowned architectural firm Olson Kundig on the final phase within Ascent at The Phoenician®—Summit by Olson Kundig—marking the firm's inaugural condominium residential project in Arizona.

Tucked at the base of Camelback Mountain and anchoring one of the state's most coveted locations, Summit by Olson Kundig will soon become the pinnacle of luxury desert living with 63 thoughtfully designed residences priced from the low \$2 millions, with a limited collection of signature penthouses ranging from \$7 million to over \$10 million. From one bedroom plus den to three bedroom plus den residences, plans range in size from 1,500 to over 4,800 square feet.



Recognized by Architectural Digest's prestigious AD100 list, Olson Kundig is known for its inspiring architecture in some of the world's most coveted locations. At Summit by Olson Kundig, integrated vision spans both architecture and interiors, creating grand spaces and open floor plans that flow seamlessly from great rooms to expansive terraces. Deep cantilevered rooflines, shaped to harmonize with the movement of the sun, create shaded outdoor spaces that effortlessly blend indoor and outdoor living. Textured facades of weathered metal and stone add depth and refinement. The residences feature luxurious finishes inspired by the natural environment, Olson Kundig-designed indoor and outdoor fireplaces, and meticulously crafted hardware from the Tom Kundig Collection, blending design and functionality.

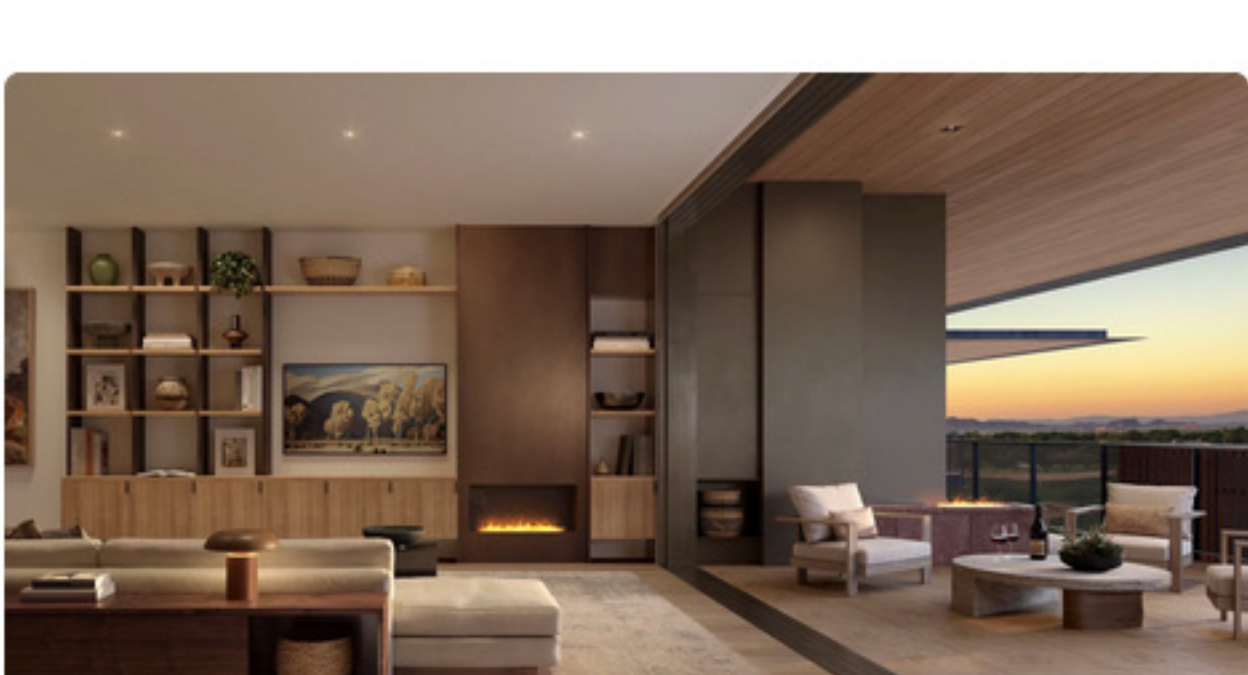
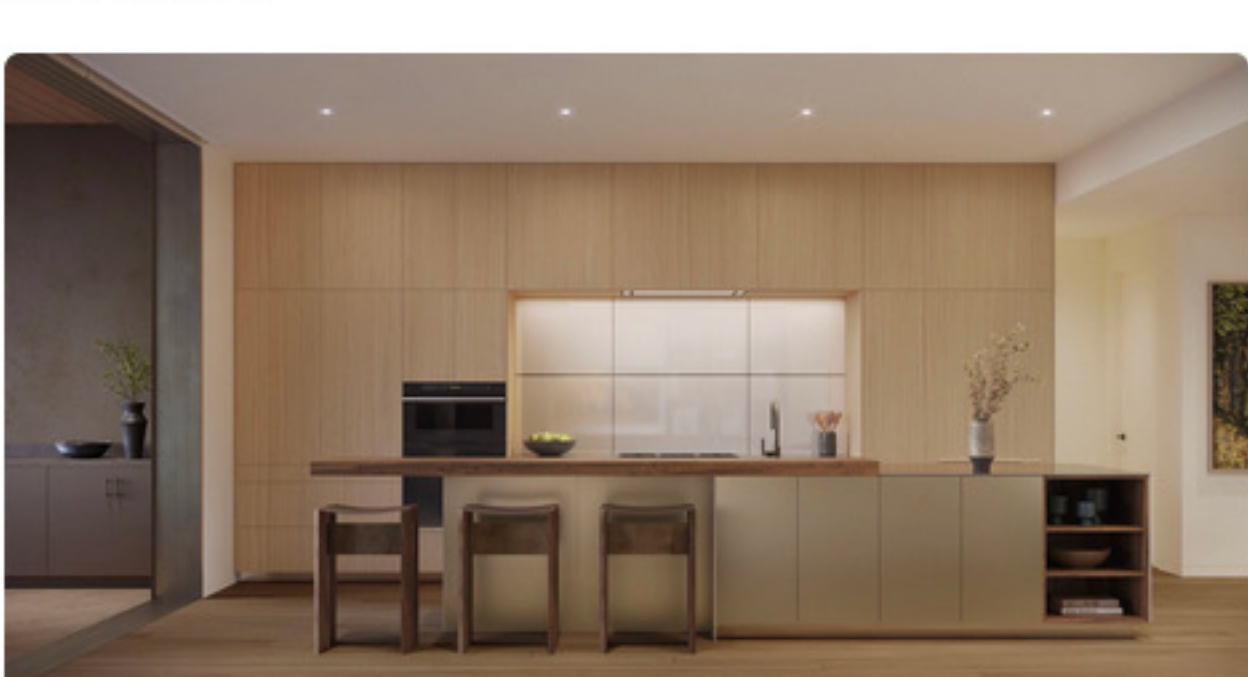
"Our design integrates with the mountain landscape, where red sandstone meets the open sky," said Kirsten Ring Murray, principal and owner of Olson Kundig. "Materials such as local stone anchor the structure to its Camelback Mountain setting, while refined metal screens respond to the shifting desert light, creating an ever-evolving architectural expression. This is a commanding project where nature and design come together to celebrate the spirit of the desert, and one that we are proud to realize for Replay Destinations."



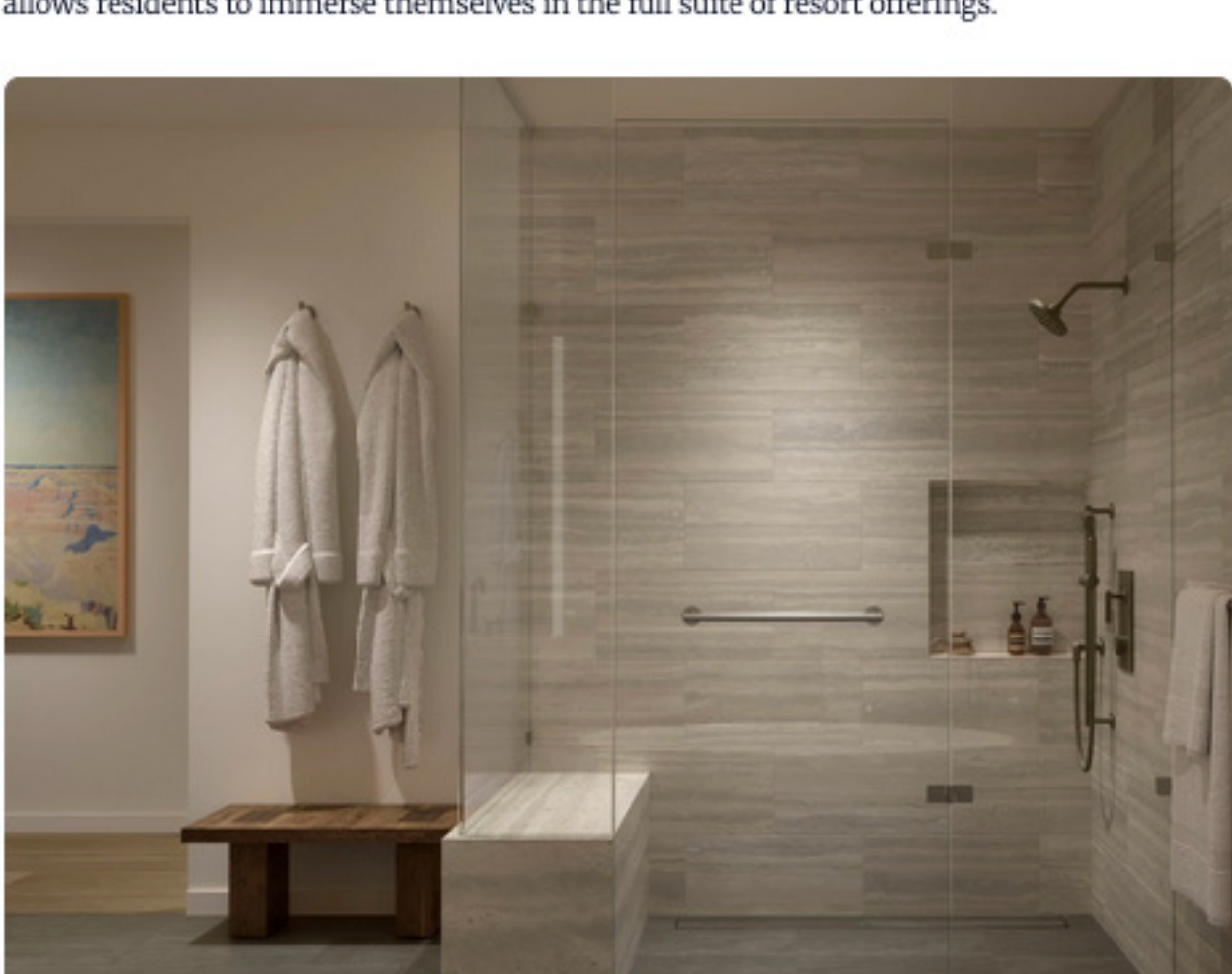
The kitchen designs are a unique collaboration between Olson Kundig and bulthaup that celebrates and integrates the living spaces of the residences with state-of-the-art Sub-Zero and Wolf Contemporary Series appliances. Each kitchen has full-height wood cabinetry and quartz countertops, while optional upgrades include pull-out pantries, small appliance garages and wine fridges.

Homeowners enjoy a rich range of amenities within steps of their residence. Summit by Olson Kundig is adjacent to Ascent's own private Mountain Club, where design and programming merge to create art-infused spaces and experiences that foster wellness, relaxation and social connections. The club includes a private pool, fitness and movement rooms, a great room, a games room and a catering kitchen for experiential events.

Throughout, the work of local artists is celebrated and access to the spectacular Cholla Trail is mere steps away.

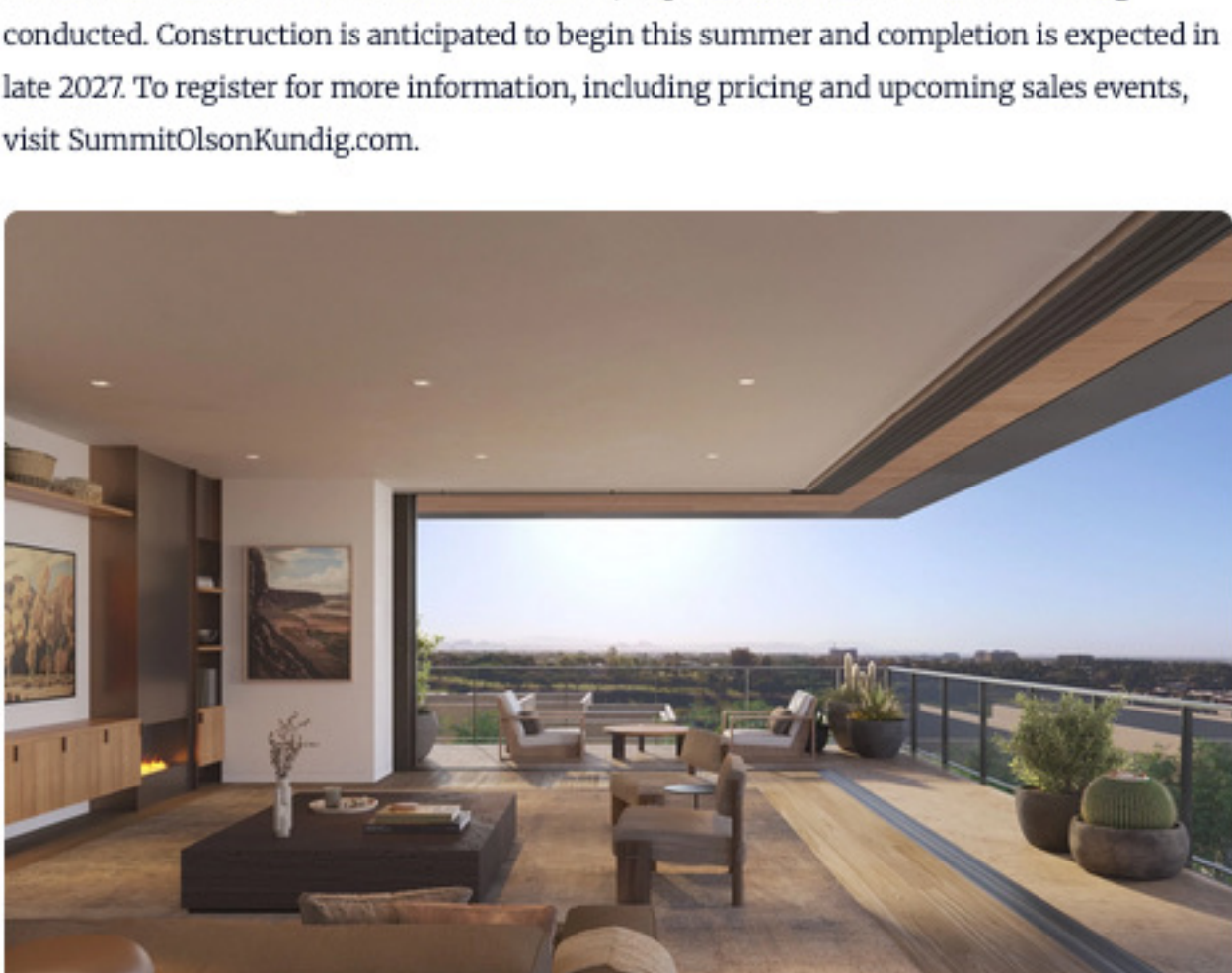


Crowning the Summit Residences' twin buildings are a pair of private rooftop terraces, ideal for watching Phoenix's famed desert sunsets. A short walk away, homeowners also enjoy immediate access to The Phoenician®, a Luxury Collection Resort, through an optional resident membership program that provides year-round privileges and exclusive discounts on its world-class amenities. Recognized as one of Arizona's most awarded resorts, The Phoenician® features multiple swimming pools, an acclaimed golf course, a celebrated spa and a diverse range of dining experiences. A picturesque walking path winds through a scenic cactus garden, connects the Ascent development to The Phoenician® Resort and allows residents to immerse themselves in the full suite of resort offerings.



"This is a truly rare opportunity to own an Olson Kundig-designed residence in one of Arizona's most iconic settings," said Brianne Kelsey, vice president of development for Replay. "Camelback Mountain provides a breathtaking backdrop that cannot be replicated, and Summit by Olson Kundig offers homeowners an extraordinary blend of timeless design and immersive Sonoran Desert living. We're honored to deliver such a distinguished collaborative architectural experience to the market."

Ascent at The Phoenician®, an \$800 million residential community spanning 25 acres, has already achieved more than \$500 million in sales throughout the community. Ahead of the March sales release of the Summit Residences, inquiries and site tours are now being conducted. Construction is anticipated to begin this summer and completion is expected in late 2027. To register for more information, including pricing and upcoming sales events, visit [SummitOlsonKundig.com](#).



### Project credits

**Architects**  
Olson Kundig

**Developers**  
Replay Destinations

### Product spec sheet

**Hardware**  
TK Collection by Olson Kundig

**Toilets**  
TOTO

**Appliances**  
Sub-Zero/Wolf

**Kitchen**  
Bulthaup

**Plumbing fixtures**  
Waterworks

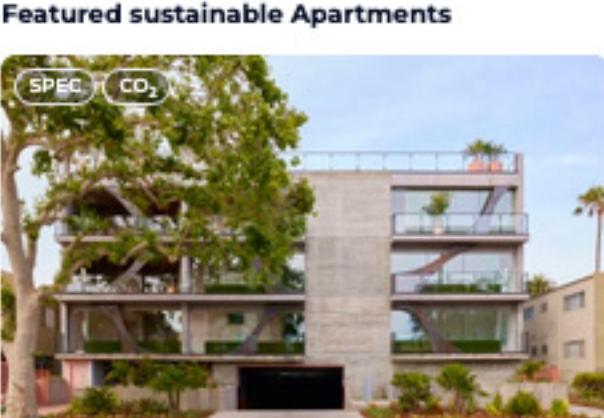
[View Full Spec Sheet](#)

### Project data

**Location**  
Scottsdale, Arizona, USA | [View Map](#)

**Category**  
Apartments

### Featured sustainable Apartments



- 1 Hide and Seek Apartments
- 2 NOTUDDSPARKEN
- 3 Interfaith Housing Development Corporation
- 4 Mahonia Crossing
- 5 Maeve on Ridge